

Quick Start Guide

Pegasus: Guidelines for email account setup

Website: Pegasus Mail - <http://www.pmail.com/>

License: Freeware

Download: Pegasus Mail - <http://www.pmail.com/downloads.htm>

Sample Configuration parameter:

Network:

Your Email address: user@your-domain.com

POP3 Host: pop.your-domain.com

User Name: user@your-domain.com

SMTP Host: smtp.your-isp.com

Password: Mailbox Password

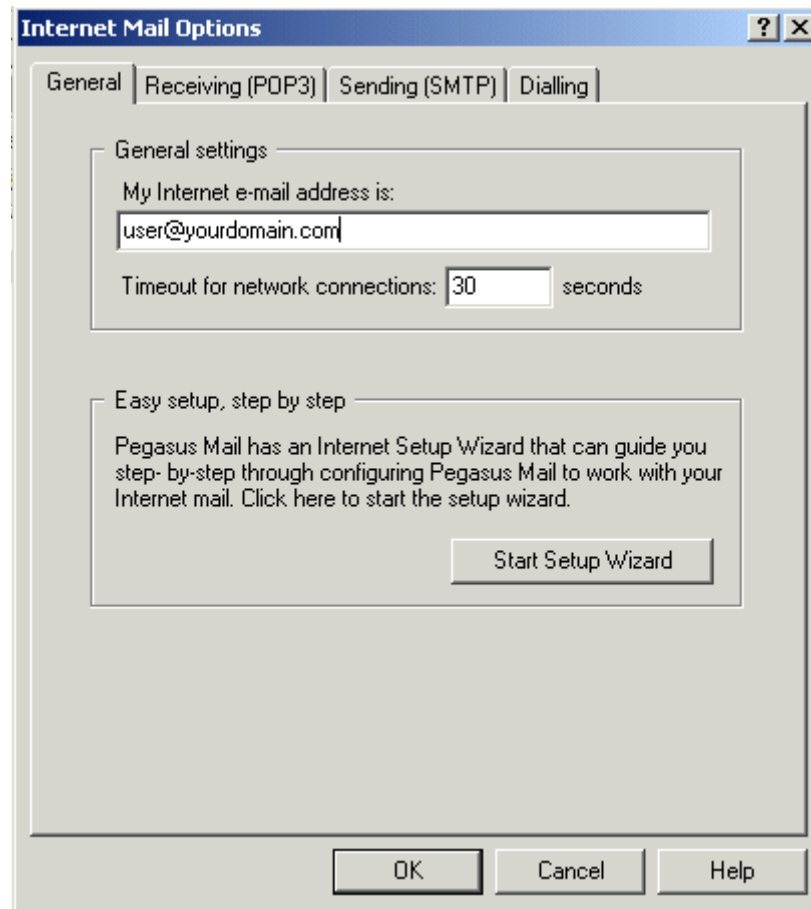
General:

Personal Name: Name Surname

(where 'your-domain.com' is the name of your registered domain with Hetzner)

Guidelines for new email account setup:

1. Launch Microsoft Pegasus
2. Select 'Network Configuration' from the 'File' menu; The Network Connection Wizard will appear
3. Select 'Start Setup Wizard'



4. Enter your Electronic Email Address

Quick Start Guide

Pegasus: Guidelines for email account setup



Pegasus Mail Internet Setup Wizard

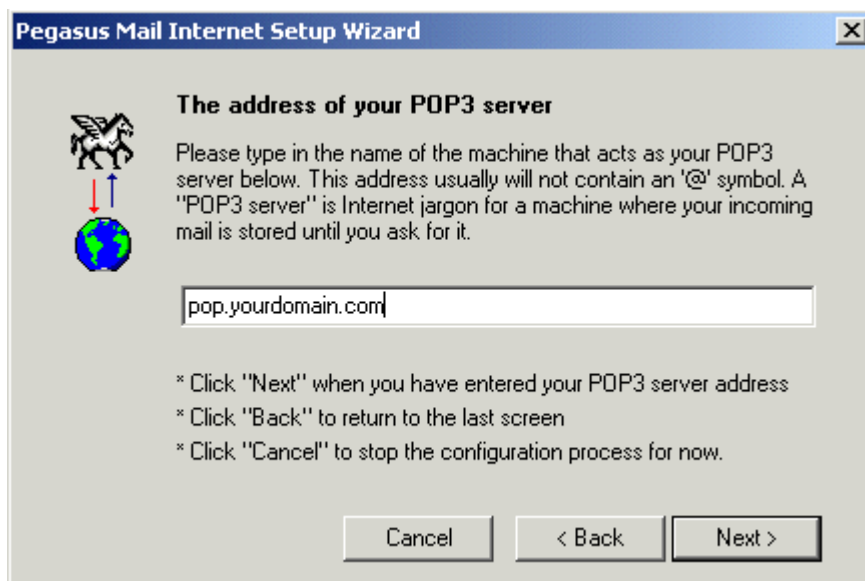
Your electronic mail address

Please type in your electronic mail address below. Your electronic mail address should look something like "sally@riverboat.org" - namely, a username followed by an '@' symbol and an Internet domain name.

* Click "Next" when you have entered your address
* Click "Back" to return to the last screen
* Click "Cancel" to stop the configuration process for now.

Cancel < Back Next >

5. Enter your POP3 Server



Pegasus Mail Internet Setup Wizard

The address of your POP3 server

Please type in the name of the machine that acts as your POP3 server below. This address usually will not contain an '@' symbol. A "POP3 server" is Internet jargon for a machine where your incoming mail is stored until you ask for it.

* Click "Next" when you have entered your POP3 server address
* Click "Back" to return to the last screen
* Click "Cancel" to stop the configuration process for now.

Cancel < Back Next >

6. Enter your Username as user@your-domain.com and Password

Quick Start Guide

Pegasus: Guidelines for email account setup



Pegasus Mail Internet Setup Wizard

 **Your username and password**

Your "username" identifies whose mail you want to get from the POP3 server, and your "password" proves that you really are who you say you are. Either may be case-sensitive, so "bob" and "BOB" may be regarded as different - be careful to type them in accurately.

User name:

Password:

* Click "Next" when you have entered your username and password
* Click "Back" to return to the last screen
* Click "Cancel" to stop the configuration process for now.

7. Enter the SMTP information as per sample configuration above



Pegasus Mail Internet Setup Wizard

 **The address of your SMTP server**

Please type in the name of the machine that acts as your SMTP server below. This address usually will not contain an '@' symbol. An "SMTP server" is Internet jargon for a machine that can send your messages to their final Internet destinations for you. You can often enter your POP3 server here, but ask your network manager or ISP if you are unsure.

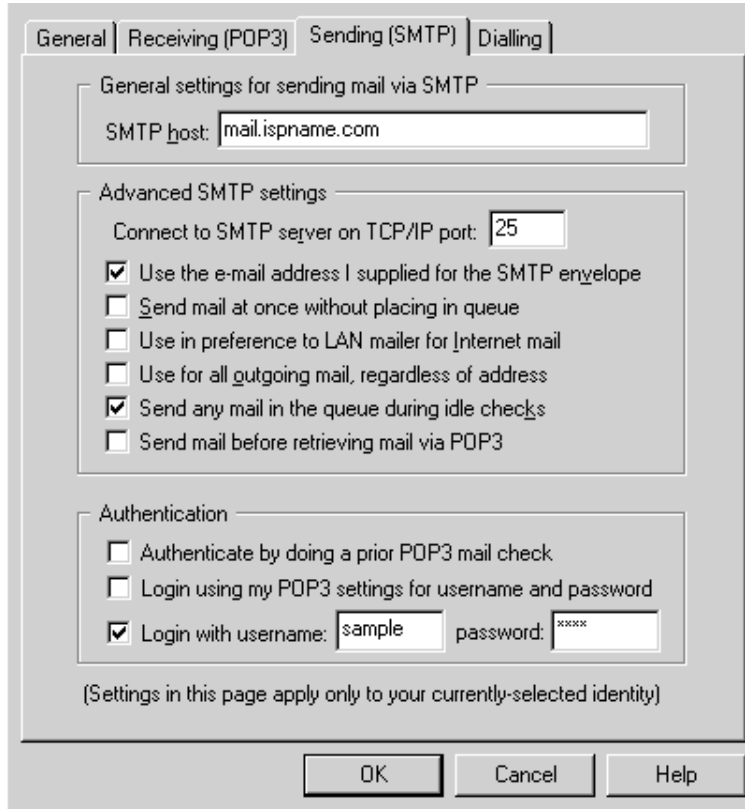
* Click "Next" when you have entered your SMTP server address
* Click "Back" to return to the last screen
* Click "Cancel" to stop the configuration process for now.

Quick Start Guide

Pegasus: Guidelines for email account setup

Enabling SMTP Authentication:

1. Select 'Network Configuration' from the 'File' menu
2. Select the 'Sending (SMTP)' tab



General | Receiving (POP3) | **Sending (SMTP)** | Dialling

General settings for sending mail via SMTP

SMTP host: mail.ispname.com

Advanced SMTP settings

Connect to SMTP server on TCP/IP port: 25

- Use the e-mail address I supplied for the SMTP envelope
- Send mail at once without placing in queue
- Use in preference to LAN mailer for Internet mail
- Use for all outgoing mail, regardless of address
- Send any mail in the queue during idle checks
- Send mail before retrieving mail via POP3

Authentication

- Authenticate by doing a prior POP3 mail check
- Login using my POP3 settings for username and password
- Login with username: sample password: xxxx

(Settings in this page apply only to your currently-selected identity)

OK Cancel Help

3. Under 'Advanced SMTP settings', set the value for 'Connect to SMTP server on TCP/IP port' to: 587
4. Select the checkbox titled 'Login using my POP3 settings for username and password'
5. Click 'OK'

Note: If SMTP authentication is not catered for by your mail program, please use the SMTP server delegated by your Internet Service Provider instead (smtp.your-isp.co.za).